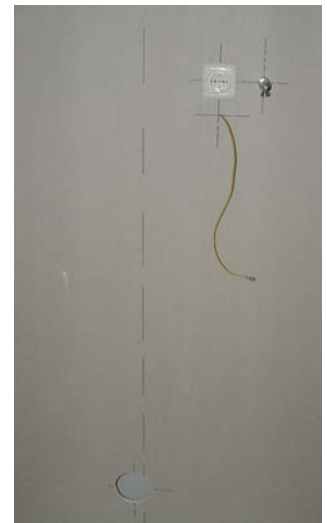


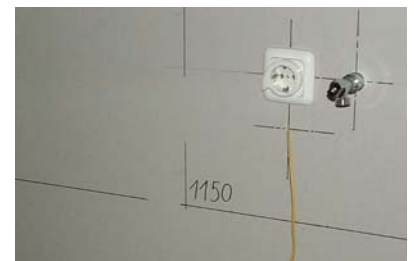
1. Fixing the middle of wall instalation

With a waterlevel fix the middle axe from the unit installation on the wall



2. Fixing the Height for wall installation(using provided dimensions sheet)

Fix the height on the middle line and extend it cross, according to the measurements of the LWC



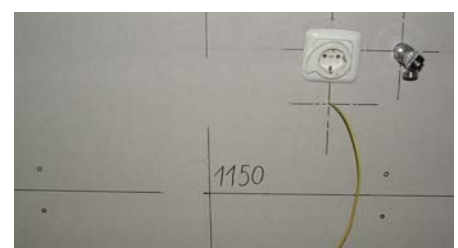
3. Fixing drill points (using provided drilling template)

Align the drilling template vertical and horizontal to the lines, so that the arrowhead and the lines coincide.

Fix the drill points and drill it.(Ø 10 mm)

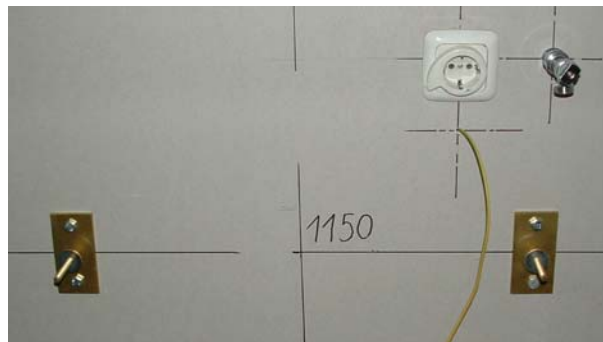


Drilling template



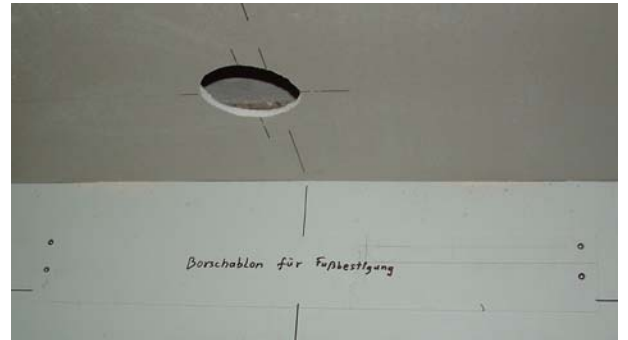
4. Monting the wall fastening

Whit the provided latches monting the wall fastening.



5. Fix holelocation on floor

Align with measuretape and provided drilling template to fixing the drill points.

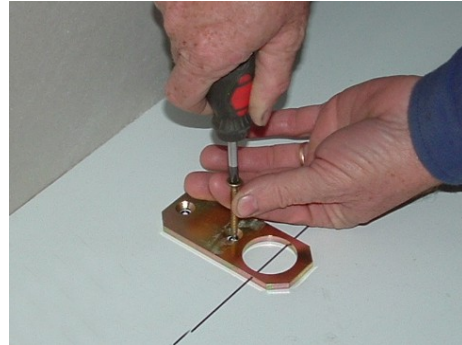


6. Drilling the floor to install latches

Punch marking the middle point of drill careful before drill it.

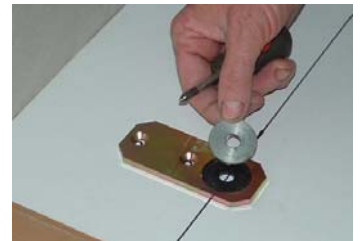
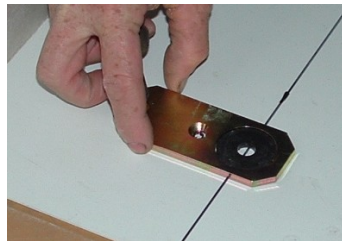
Attencion:

Work exactly. There is no space for tolerance. (\varnothing 8 mm)



7. Monting the latches on floor

With the provided latches monting the floor fastening.



8. Perform drilling for waster water hose



9. Assambling the toilet bowl

a) connect water supply hose to bowl.

b) connect waste water flexihose to bowl and secure with tape.

c) fix bowl to instalation

d) connect water supply hose to reservoir and secure with tape

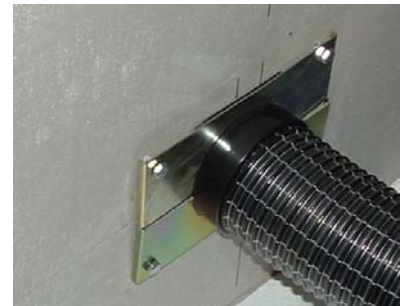


10. Removing upper cover

Unscrew cover and pull out upwards

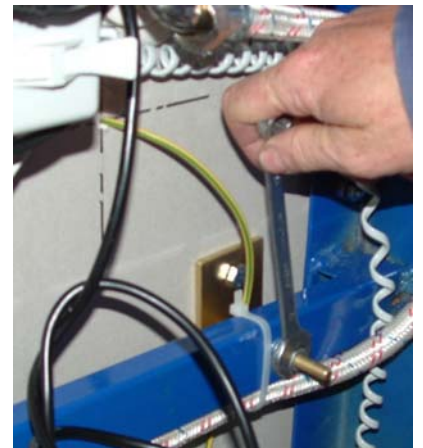
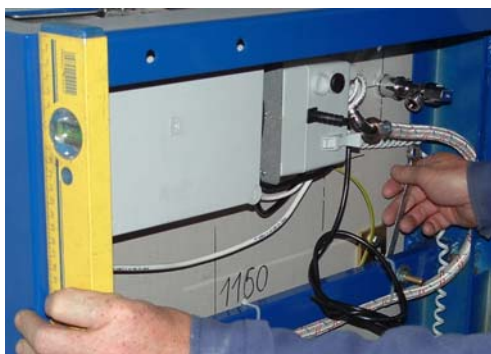


11. Installing the waste water hose



12. Fixing Lift Toilet to wall

- Place the Lift Toilet in the fixing bolts and in the same time make sure that the adjustments screws in the lower part of the toilet are snapped in the ground latches.
- After positioning the unit the bolts will be tightened.



13. Connecting water supply

Connect flexihose from unit to valve.
Adapter 3/8"-1/2"



14. Installing ground cable

Connect ground cable to marked cater holder

Attencion:

Work must be performed by
authorized personel



15. Electrical connection

Plug cable in to power
source



16. Final check

- a). Check all water conections for properfit
- b). Check water level in reservoir
- c). Check electrical functioning (lift, tilt, flushing))

17. Reinstallation of upper cover

