

Stand up support type: R2Dfx

Large h5 plate

Informations

The R2DFX stand up, helps elderly or disabled people who have difficulty sitting down on and standing up from the toilet to manage this process independently. The movement of the stand-up aid is designed to optimally follow the actual line of movement between sitting and standing up, so that the user can perform the previously very laborious and effort-intensive process with little effort and simply by pressing a button.

The unit is simply built and offers wide adjustment possibilities for

A) adaptation to the different types of toilet bowl

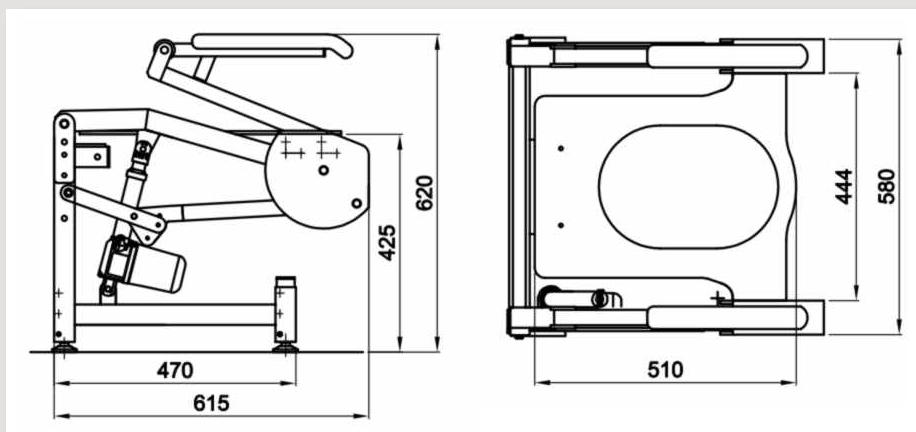
B) adaptation to the the user typ.

For this purpose, the equipment has 3 operating modes that can be adjusted to the user's needs with a simple mechanical change of a lever. It can be adapted to taller or shorter people, and vertical adjustment only is also possible. Thanks to its multiple adjustment options, it can be used in almost any situation.

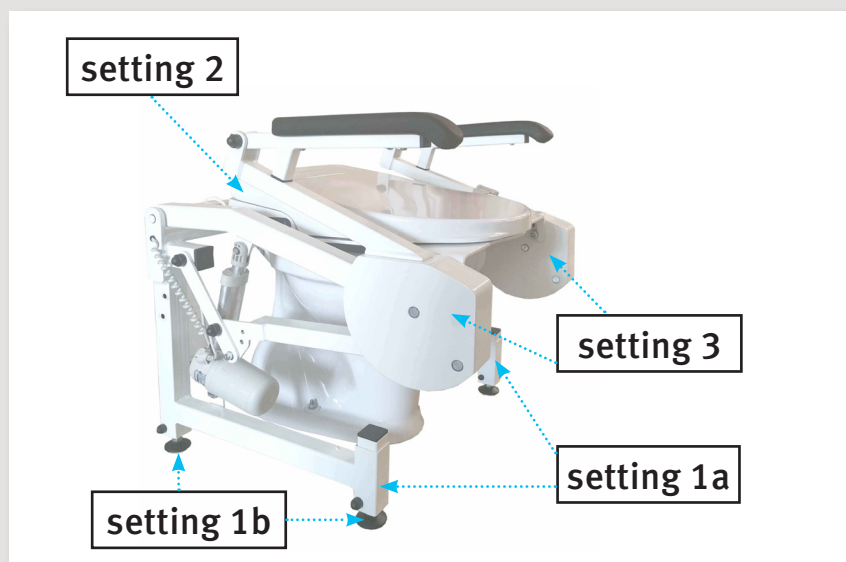


Technical Data

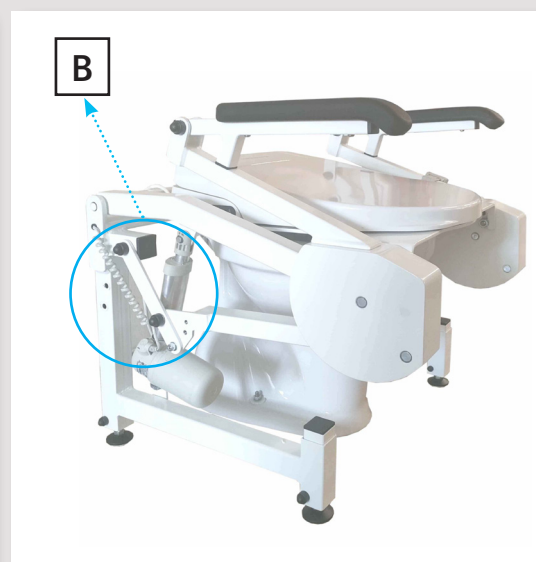
- ✓ Dimensions: 615 x 580 x 620
- ✓ Maximum load capacity:
 - 1 motor: 100 kg
 - 2 motors: 150 kg
- ✓ Weight: 25 kg
- ✓ Lifting range: 425-760 mm
- ✓ Max. Inclination: 40
- ✓ Protection class: IP44
- ✓ Power supply: 220 - 230V/50Hz, 16 A
- ✓ Lifting motor: 24 VDC
- ✓ Material: powder coated steel
- ✓ Color: white
- ✓ Environmental data:
 - Temperature +5 °C to +40 °C



A) Adaptation to the different types of toilet bowl



B) adaptation to the the user type



A) Adaptation to the different types of toilet bowl

Setting 1a | Height: Rough adjustment



Height adjustment
80 mm in 2 steps

Setting 1b | Height: fine adjustment



Height adjustment
30 mm stepless

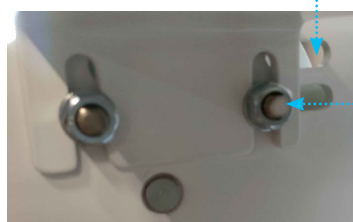
Setting 2 | Attachment to the toilet bowl



Horizontal 30 mm
(here: Ad sight)

Setting 3 | Seatplate

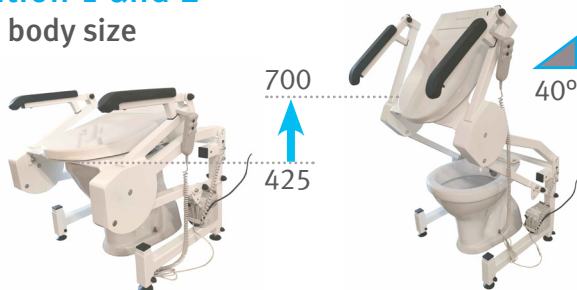
Horizontal 30 mm



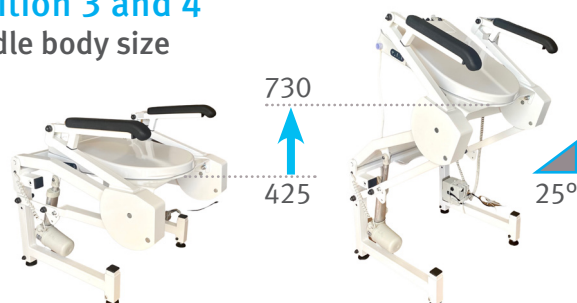
Vertical 30 mm

B) Adaptation to the the user type

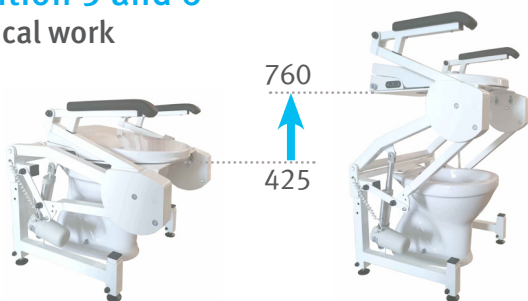
Position 1 and 2 High body size



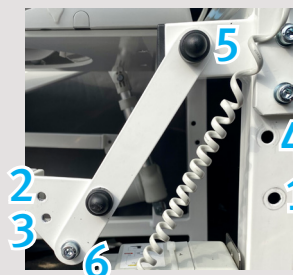
Position 3 and 4 Middle body size



Position 5 and 6 Vertical work



Attention: Before making any adjustments, please loosen both sides of the levers — that means (depending on the specified position) completely unscrew the screws (here 6 and 5), remove screws and nuts. The new position can then be adjusted on both sides at the same time.



Commissioning

The following steps must be followed:

1. ADAPTATION TO THE USERS
According to **point B**, select the appropriate operating mode. After selecting and setting the operating mode, adapt the system to the toilet seat.
2. ADAPTATION TO THE TOILET BOWL
Proceed as follows:
 1. measure toilet height.
 2. select coarse adjustment of the system according to **setting 1a**.
 3. place rising aid over the toilet.
 4. make fine adjustment according to **setting 1b**.
 5. adjust and fasten the system to the toilet bowl according to **setting 2**.
 6. After fixing the system to the toilet bowl, adjust the feet (setting 1b) again so that the system lies firmly on the bowl, then fix the position with the counterpart of the setting 1b.
 7. adjust the seat plate to the hole of the toilet bowl according to **setting 3**. With an optimal setting the seat plate covers the hole in such a way that under the seat plate the inner rim of the toilet bowl is not visible.
 8. power connection and test of the system.
 9. attach toilet seat or shower-bidet to the seat plate of the Attach the stand-up aid.